



2022 Lining Map #3

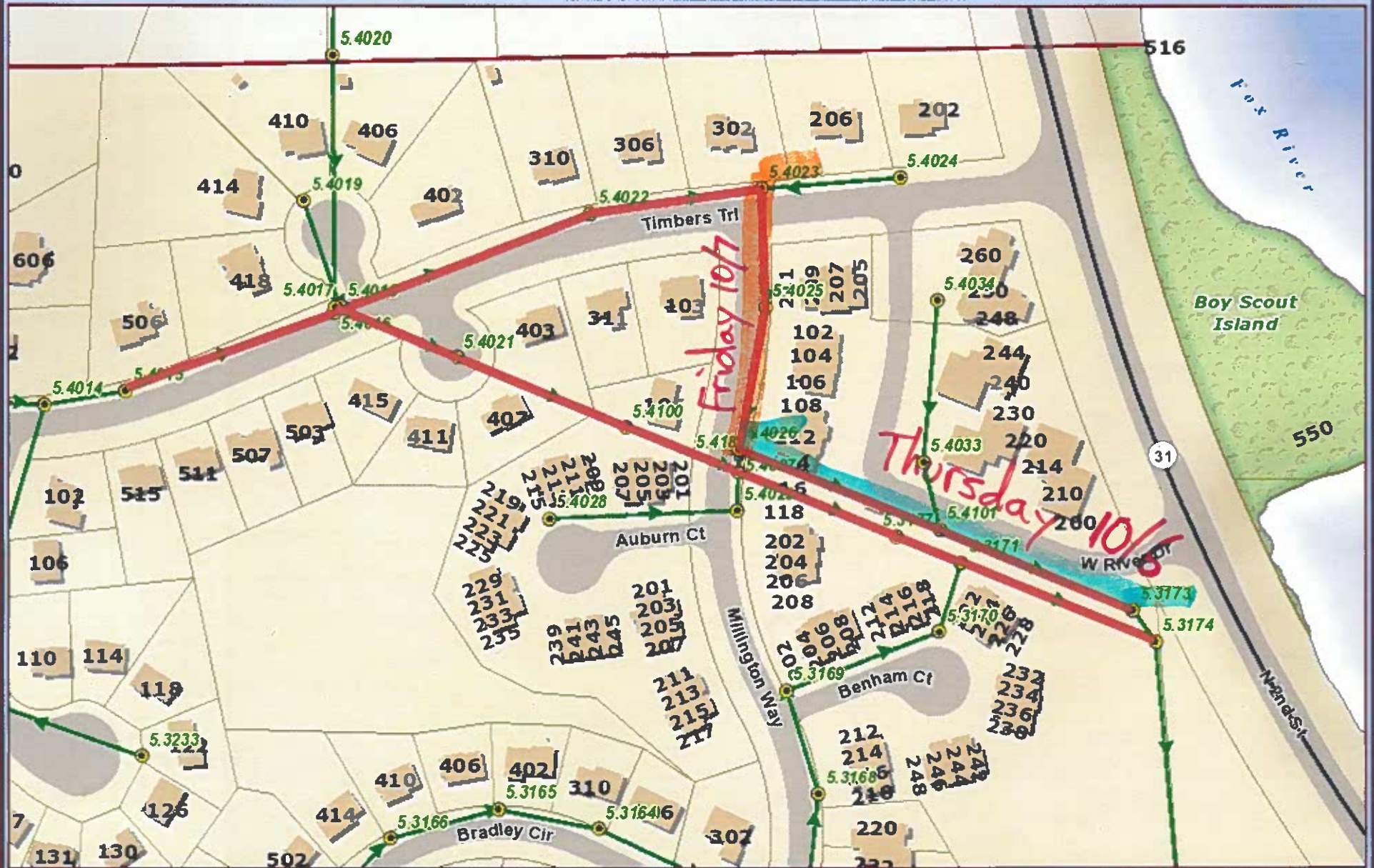


Data Source:
City of St. Charles, Illinois
Harris County, Illinois
DuPage County, Illinois
Projection: Transverse Mercator
Coordinate System: Illinois State Plane East
North American Datum 1983
Printed on: April 11, 2022 09:59 AM



0 50 100 Feet

This work was created for planning purposes only and is provided as a public courtesy of city funds, other expressed or implied. The information represented may contain proprietary and confidential property of the City of St. Charles, Illinois. Under United States Copyright protection laws you may not use, reproduce, or distribute any part of this document without prior written permission. To obtain written permission please contact the City of St. Charles at Two East Main Street, St. Charles, IL 60174.
Approved by Council



Map #1

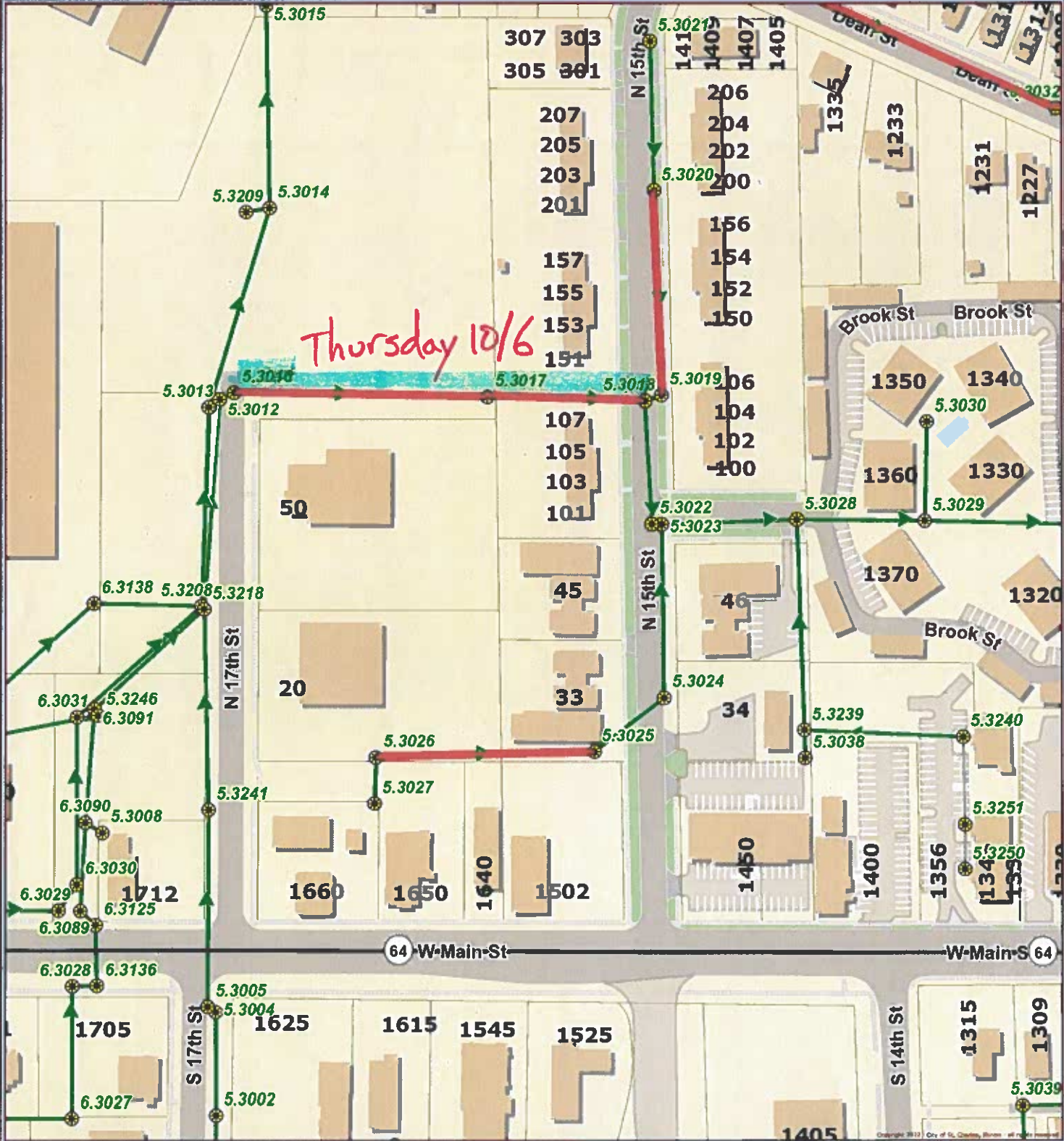
Map #1

Map #1



0 50 100 Feet

This work was created for planning purposes only and is provided as is, without warranty of any kind, either expressed or implied. The information represented may contain proprietary and confidential property of the City of St. Charles, Illinois. Under United States Copyright protection laws you may not use, reproduce, or distribute any part of this document without prior written permission. To obtain written permission please contact the City of St. Charles at Two East Main Street, St. Charles, IL 60174.



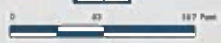
Thursday 10/6



Data Source:
City of St. Charles, Illinois
Kane County, Illinois
DuPage County, Illinois
Coordinate System: Illinois State Plane East
Projection: Transverse Mercator
North American Datum 1983
Posted on: March 16, 2012 09:43 AM



Map #2



This work was created for planning purposes only and is provided as is, without warranty of any kind, either expressed or implied. The information represented may contain proprietary and confidential property of the City of St. Charles, Illinois. Under United States Copyright protection laws you may not use, reproduce, or distribute any part of this document without prior written permission. To obtain written permission please contact the City of St. Charles at Two East Main Street, St. Charles, IL 60174